



## August 2015 Issue

### SCOP Hosts Earthquake Forum



**Photo Caption:** Left to right: Eugene Jones, SCOP Officer, Caroline Orchiston and Emily Lambie from New Zealand, Ned Savage, SCOP Reserve, Mike Brazzell, SCOP Officer

“If an earthquake hits, will you be ready?” “What have you done to prepare?” “Do you have earthquake insurance?” These were some of the questions posed during an earthquake forum at the Shelby County Office of Preparedness (SCOP) on July 27. Caroline Orchiston, from the University of Otago, and Emily Lambie, from the Joint Center for Disaster Research, Wellington, both from New Zealand, led the focus group of staff, Shelby County employees, and citizens.

After questionnaires were completed, attendees sat enthralled listening to a first-hand account of surviving 6.3 magnitude earthquakes occurring September 2010 and February 2011 in Christchurch, New Zealand. The epicenter, “right under the city,” destroyed 8 blocks of the business district. A total of 180 deaths were reported. They described how life changed - no electricity, gas fires, liquefaction, crumbled buildings, and disruptions in communications. Due to ruptured sewer lines, 300,000 port-a-potties were shipped to Christchurch. A slow recovery continues in Christchurch today – with most citizens choosing to rebuild.

Orchiston and Lambie are traveling throughout Tennessee and Arkansas meeting with agencies to collect earthquake preparedness data and share their story of survival. The following day, they met with officials at the University of Memphis Center for Earthquake Research and Information (CERI).

### Shelby County Hazard Mitigation

The Shelby County Hazard Mitigation Plan is being updated by Shelby County and its municipalities as a guide to identify and implement mitigation projects. These projects will help reduce the human, economic, and environmental costs of natural disasters. The Shelby County Hazard Mitigation Committee met on August 13 and will hold a follow-up meeting on October 7, 2015 at the Emergency Operations Center, 1075 Mullins Station Road, Memphis, TN 38134. All are encouraged to participate. For more information, please contact the Shelby County Office of Preparedness at 901.222.6700.

## SCOP at Porter-Leath



**Photo Caption:** Melissa Rivera, CERT Graduate / Porter-Leath employee

The Shelby County Office of Preparedness visited with Melissa River, a Porter-Leath employee and Community Emergency Response Team (CERT) graduate, to deliver “Ready Kids” activity books, Citizen Corps bags, and colorful rubber bracelets for their back-to-school initiative. Porter-Leath, a non-profit organization that benefits at-risk children, is located at 868 North Manassas, in Memphis.

## Hispanic Health Fair and Back to School Event



**Photo Captions:** Left: Agencies attending the Hispanic Health Fair and Back to School event. Organizer Ivette Baldison is 2<sup>nd</sup> from left, 2<sup>nd</sup> row.

On Saturday July 18, the Shelby County Office of Preparedness was delighted to attend the Hispanic Health Fair and Back to School event at the El Mercadito, at 3766 Ridgeway, in Memphis. Over 500 parents and children took advantage of the free school supplies, hygiene kits, and general health screenings. The organizer, Ivette Baldison, Assistant to the Shelby County Major for Hispanic Affairs, was delighted with the attendance. “They were waiting outside the door at least an hour before our start time!” Agencies attending included: Shelby County Office of Preparedness, Shelby County Health Department, Shelby County Crime Victims Center, United Dental Group, Salizar Dental Office, Utility Medical Clinic, Tennessee Senior Medicare Patrol, and the Aging Commission of the MidSouth. Sponsoring agencies included La Prensa Latina, Methodist LeBonheur Healthcare, Target, Kroger, Radio Ambiente Caliente, the Dental Connection, and El Mercadito.

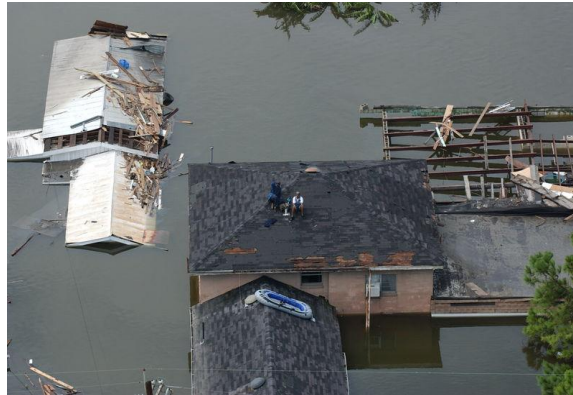
## Shelby County Office of Preparedness Outreach



**Photo Captions:** **Left:** SCOP Reserve Officer, Jo Griffith, standing, at the Greater Life M.B. Church. **Right:** A young student is excited to receive activity books at the New Dimensions Ministries Health Fair.

Shelby County Office of Preparedness (SCOP) Reserves were on hand to greet parents and children and distribute FEMA preparedness brochures, Ready Kids coloring books, HELP / OK signs, and Citizen Corp bracelets at two fun health fair / back-to-school events. On July 25, Reserves met over 65 citizens at the Greater Life M.B. Church Health Fair at 3599 Vanuys Road. On August 1, Reserves attended the New Dimensions Ministries Health Fair, at 3607 Frayser Raleigh Road, meeting over 200.

## Katrina 10<sup>th</sup> Anniversary



**Photo Caption:** Major flooding following Hurricane Katrina, New Orleans, LA. Photo by FEMA.

After a decade, Hurricane Katrina remains the costliest natural disaster in U.S. history. Tropical depression Katrina, formed on August 23, 2005, 200 miles southeast of Nassau in the Bahamas. It became a tropical storm moving towards southern Florida on August 24 and 25. It developed into a Category 5 hurricane on August 28, with sustained winds of 175 mph. It made landfall at Buras, Louisiana on August 29, a Category 3 hurricane, with 125 mph winds. It then made a second landfall at the Louisiana / Mississippi border. It weakened and moved north over land, becoming a tropical depression over the Tennessee Valley on August 30. The 10 to 28 foot storm surge impacted the coastal areas across Southeast Louisiana and Coastal Mississippi, with Bay St. Louis and Pass Cristian, Mississippi receiving 28 feet of water. Storm surge overtopped the levee system in Orleans and St. Bernard Parishes leading to catastrophic levee failure and extensive flooding. 1,833 deaths were reported. Katrina resulted in one of the largest displacements of a population in U.S. history.

## Shelby Cares Ready for Evacuees

The Atlantic hurricane season, June 1 to November 30, is predicted to be a “below-normal” season, according to the National Oceanic and Atmospheric Administration Climate Prediction Center. However, the El Nino, predicted to continue throughout the hurricane season, has citizens living along the Atlantic and Gulf Coast keeping an eye on the tropical storms than may develop into a hurricane.

Shelby Cares, the county’s faith-based sheltering initiative, led by Terry Donald, SCOP Officer, met with their partners and volunteers at the Emergency Operations Center on August 19. The group was updated on the potential for sheltering citizens evacuating to Shelby County from the Gulf Coast due to a category 3 or greater hurricane. All agreed they are ready to set up sheltering if needed.

## Medical Response to Bombing



**Photo Caption:** Connie Blackford instructs students at the Emergency Operations Center

The Shelby County Office of Preparedness hosted a “Medical Preparedness and Response to Bombing” seminar on August 11 and 12, 2015 at the Emergency Operations Center. Emergency and medical professionals attended. Students were presented case studies to help educate them on how to respond to blast effects. The seminar was presented by Texas A & M Engineering Extension Service.

## emPOWER Map

The Department of Health and Human Services has launched a new web-based tool to track Medicare patients who are dependent on electrically powered medical equipment. The “emPOWER Map” allows emergency officials to search a location by ZIP code, county, state, or territory to see how many such patients are in the area. No personal information is displayed on the map. When a location is identified, a NOAA weather alert automatically appears on the map as well. This tool can help first responders, hospitals, and emergency managers know the number of at-risk citizens living in a certain location and help them plan evacuations and sheltering accordingly. To find out more, please visit: [www.hhs.gov](http://www.hhs.gov).

## Ham Check In!

All licensed amateur “ham” radio operators are invited to check-in to the Shelby County Office of Preparedness Emergency Reserve Net (SCOPERNET), Mondays, 6:00 p.m., on 147.09 repeater, tone 107.2. Ned Savage, Reserve Officer, is net control. The net is also activated during weather warnings.

## Inclement Weather / Outages



**Photo Captions:** August 5 severe thunderstorm: **Left:** wind and rain on Austin Peay, **Middle:** signal light out on Poplar Avenue backing up traffic, **Right:** low-hanging clouds on I40

### National Weather Service (NWS) in Memphis Reported:

**Heat Advisory:** July 17, 18, 19, 20, 24, 26, 27; August 9, 10

**Excessive Heat Warning:** July 25, 28 (heat indices above 110 degrees)

**Flood Advisory:** July 17, 18, 19, 20, 22, 24, 25, 26, 28; August 5, 10

**Flood Warning:** July 23

**Severe Thunderstorm Warning:** July 22; August 5 (downed trees and power lines), August 7, 15

### Memphis Light, Gas and Water Reported:

**July 16:** 761 outages

**July 22:** 2,000 outages

**July 23:** 4,000 outages

**July 29:** 1,700 outages (Germantown) and 1,400 (Hickory Hill)

**August 5:** 43,738 outages. 21 outside crews were called in to assist MLGW

**August 7:** 8,169 outages

The Shelby County Office of Preparedness reminds citizens to have an ALERTFM or NOAA all-hazards radio with battery back-up and tone alert. Heed the watches and warnings! Check the National Weather Service forecast at: [www.weather.gov](http://www.weather.gov). Report a utility emergency by calling MLGW at 901.528.4465. Report outages by calling 901.544.6500. Outage map: [www.mlgw.com/residential/outagemap](http://www.mlgw.com/residential/outagemap).



**Photo Captions:** **Left:** MLGW repairing a broken utility pole, **Middle:** Signal light out on Jackson Avenue. **Right:** Downed tree at Yale and Covington Pike during morning rush hour traffic.

## Mississippi River Drops



**Photo Caption:** Mississippi River driftwood August 18, 2015

Piles of driftwood dot the banks of the Mississippi River as it continues to drop. On August 19 the river level was 6.8 feet according to the National Weather Service Advanced Hydrologic Prediction Service. To obtain the next river statement, visit [www.weather.gov](http://www.weather.gov).

## Preparedness Training

Visit [www.staysafeshelby.us](http://www.staysafeshelby.us) to sign up for these **FREE** classes:

- Sports and Special Event Incident, August 26 - 27, 8:00 a.m. – 4:00 p.m.
- ICS-300: Intermediate ICS for Expanding Incidents, September 9 - 10, 8:30 a.m. – 4:00 p.m.
- Critical Asset Resource Management, September 15 - 16, 8:00 a.m. – 4:00 p.m.

## Resources

**Shelby County Office of Preparedness:** [www.staysafeshelby.us](http://www.staysafeshelby.us), 901.222.6700.

- Citizen Corps: [citizencorps@shelbycountyttn.gov](mailto:citizencorps@shelbycountyttn.gov)
- Community Emergency Response Team: [eugene.jones@shelbycountyttn.gov](mailto:eugene.jones@shelbycountyttn.gov).
- Shelby Cares Faith-Based Sheltering Initiative: [terry.donald@shelbycountyttn.gov](mailto:terry.donald@shelbycountyttn.gov)
- Storm Shelter Registry: [kimberlyn.bouler@shelbycountyttn.gov](mailto:kimberlyn.bouler@shelbycountyttn.gov)

**Shelby County:** [www.shelbycountyttn.gov](http://www.shelbycountyttn.gov).

- Shelby County Medical Reserve Corps: [www.shelbycountymrc.org](http://www.shelbycountymrc.org).
- Shelby County Public Health Emergency Preparedness: [www.schdresponse.com](http://www.schdresponse.com)

**Federal Emergency Management Agency (FEMA):** [www.fema.gov](http://www.fema.gov).

**Memphis Light, Gas and Water (MLGW):** [www.mlgw.com](http://www.mlgw.com), [www.mlgw.com/residential/outagemap](http://www.mlgw.com/residential/outagemap).  
Emergency / Outages: 901.544.6500, Downed Power Lines: 901.528.4465.

**National Weather Service (NWS):** [www.weather.gov](http://www.weather.gov), [www.weather.gov/memphis](http://www.weather.gov/memphis), 901.544.0399.

**Tennessee Emergency Management Agency (TEMA):** [www.tnema.gov](http://www.tnema.gov).

**EMERGENCY: Call 911**